



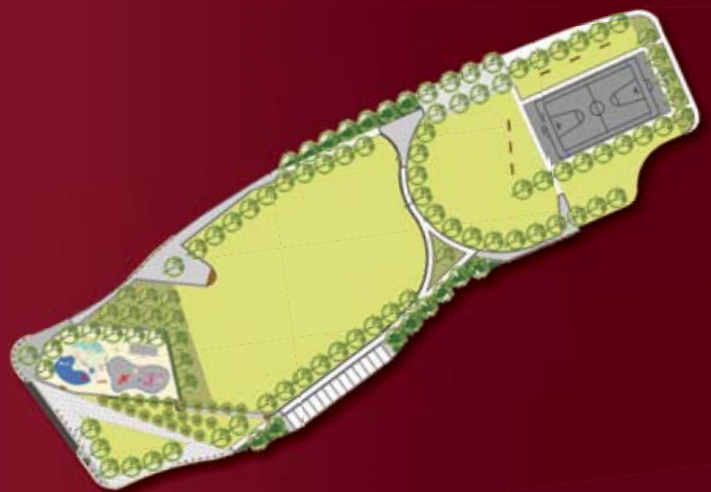
# The Clonattin village Concept

Clonattin Village has been carefully designed to create a pleasant and secure living environment adjacent to a thriving town.

The site has an extremely pleasant aspect and faces South and East on a gentle sloping hill with a fine panoramic view. Small private Cul-de-sacs and Courtyard arrangements have thoughtfully been created giving a safe friendly environment. Strong emphasis shall be placed on Avenue Tree planting, hedging and gardens creating a delightful landscaped setting. Existing mature trees have been carefully integrated into the scheme layout.

'Clonattin Village' offers tremendous visual variety, with numerous house types to choose from. Each Cul-de-sac and Courtyard contains a selection of house types and will enjoy a carefully landscaped amenity area.

The village design concept has been enhanced with the addition of a convenient Retail centre and communal civic areas. Residents can enjoy a sustainable living environment on their doorstep. The village includes a park incorporating a state of the art childrens playground and a multi surface sports pitch.





**House Type A**

2 Bed Bungalow  
676 sq.ft / 62.9 sq.m



**House Type B**

2 Bed Storey Terrace  
787 sq.ft / 73.2 sq.m



**House Type C**

3 Bed 2 Storey Terrace/Semi  
1,126 sq.ft / 104.8 sq.m



**House Type D**

4 Bed 2 Storey Terrace Semi  
1,335 sq.ft / 124.2 sq.m



**House Type E**

4 Bed 2 Storey Corner Terrace  
1,327 sq.ft / 123.4 sq.m



**House Type H**

4 Bed 2 Storey Detached  
1,518 sq.ft / 141.2 sq.m



**Spring Dale & The Court  
2 & 3 Bed  
Apartments**



**House Type K**

4 Bed 2 Storey Terrace/Semi  
1,320 sq.ft / 122.8 sq.m



**House Type L**

4/5 Bed 3 Storey Detached  
1,447 sq.ft / 134.4 sq.m